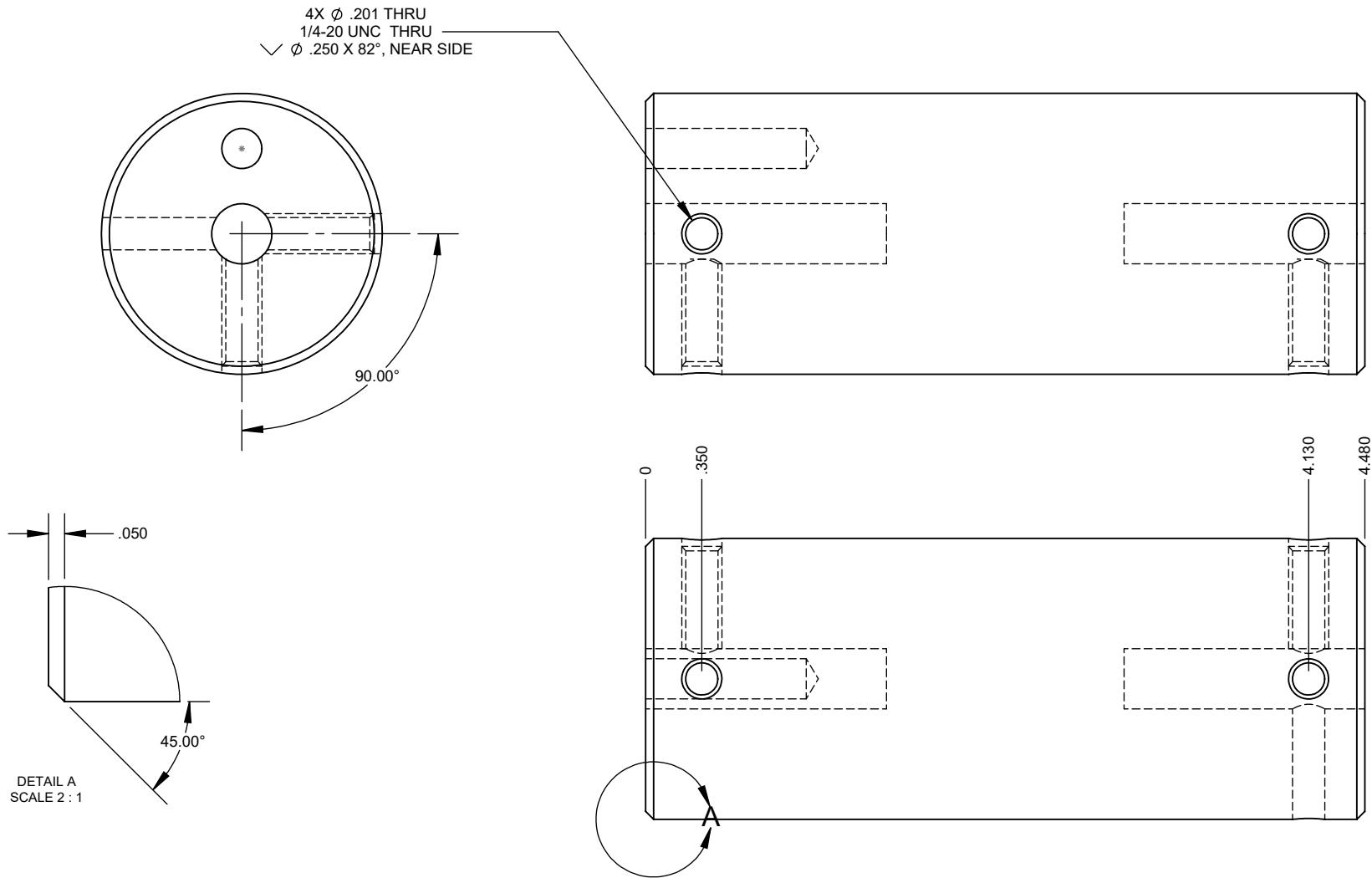


AFM Part Number 103142

Job Number		DIMENSIONS ARE IN INCHES TOLERANCES: FRACTIONAL \pm .032 ANGULAR: MACH \pm BEND \pm TWO PLACE DECIMAL \pm .010 THREE PLACE DECIMAL \pm .005		NAME	DATE	AFM Engineering, Inc.	
				DRAWN	Irwin		
PROPRIETARY AND CONFIDENTIAL THE INFORMATION CONTAINED IN THIS DRAWING IS THE SOLE PROPERTY OF AFM ENGINEERING, INC. ANY REPRODUCTION IN PART OR AS A WHOLE WITHOUT THE WRITTEN PERMISSION OF AFM ENGINEERING INC. IS PROHIBITED.		MATERIAL 6061 Alloy FINISH Anoize Black Hard		CHECKED	Irwin	1/12/2010	AFM Engineering, Inc. Part # 103142 Knurled Roller 2X4 3X6
				ENG APPR.			
				MFG APPR.			
				Q.A.			
NEXT ASSY		USED ON	COMMENTS:				
APPLICATION		DO NOT SCALE DRAWING					
				SIZE	DWG. NO.	REV.	
				A	15310-001 2X4 3X6		
				SCALE:1:1	WEIGHT: 1.001	SHEET 1 OF 2	



PROPRIETARY AND CONFIDENTIAL

THE INFORMATION CONTAINED IN THIS DRAWING IS THE SOLE PROPERTY OF AFM ENGINEERING, INC. ANY REPRODUCTION IN PART OR AS A WHOLE WITHOUT THE WRITTEN PERMISSION OF AFM ENGINEERING INC. IS PROHIBITED.

		DIMENSIONS ARE IN INCHES TOLERANCES: FRACTIONAL ±.032 ANGULAR: MACH ± BEND ± TWO PLACE DECIMAL ±.010 THREE PLACE DECIMAL ±.005		NAME	DATE	AFM Engineering, Inc.		
			DRAWN	Irwin	1/12/2010			
			CHECKED	Irwin	1/12/2010	AFM Engineering, Inc. Part # 103142 Knurled Roller 2X4 3X6		
			ENG APPR.					
			MFG APPR.					
		Q.A.						
		COMMENTS:						
		MATERIAL	6061 Alloy			SIZE DWG. NO. REV. A 15310-001 2X4 3X6		
NEXT ASSY	USED ON	FINISH	Anoize Black Hard					
APPLICATION		DO NOT SCALE DRAWING						
					SCALE:1:1 WEIGHT: 1.001 SHEET 2 OF 2			