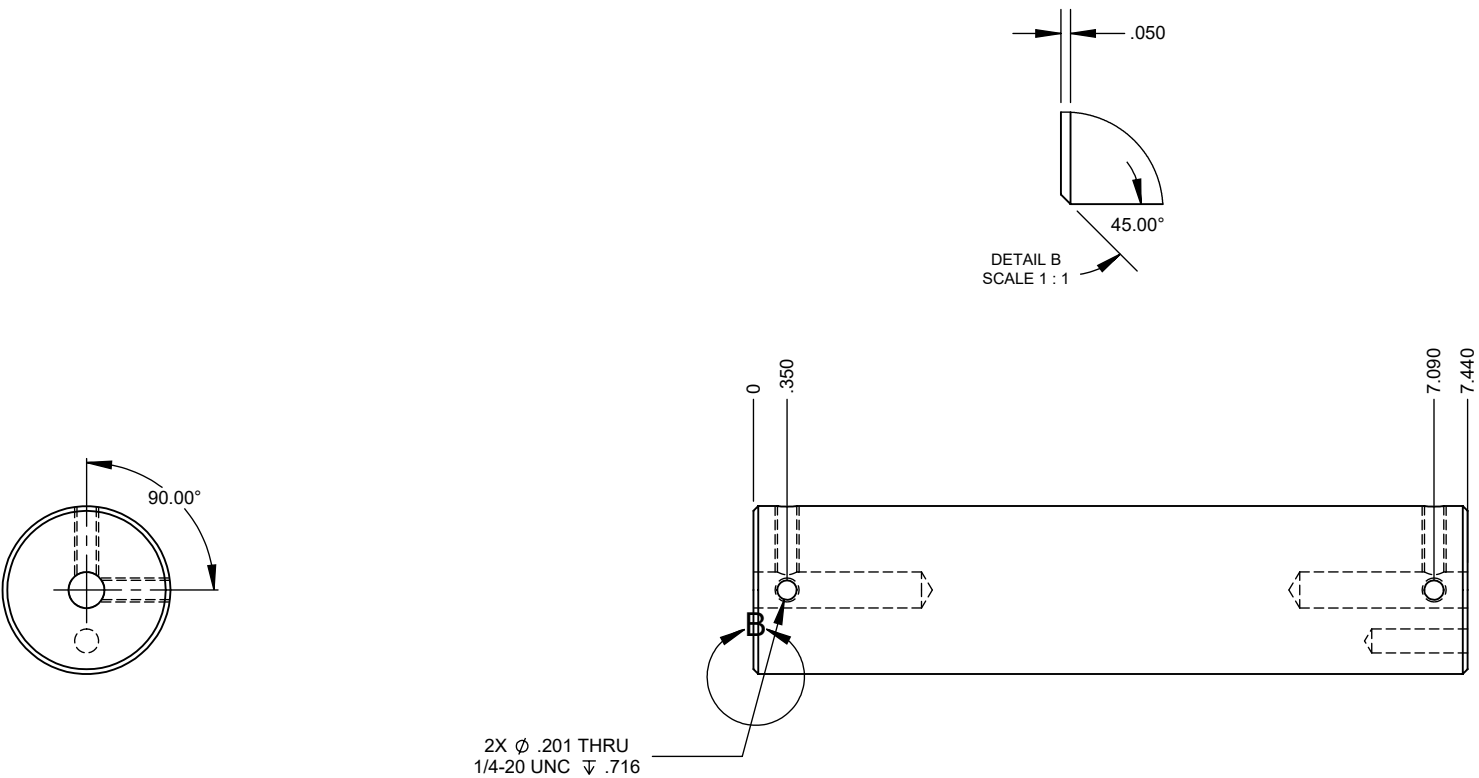


PROPRIETARY AND CONFIDENTIAL

THE INFORMATION CONTAINED IN THIS DRAWING IS THE SOLE PROPERTY OF AFM ENGINEERING, INC. ANY REPRODUCTION IN PART OR AS A WHOLE WITHOUT THE WRITTEN PERMISSION OF AFM ENGINEERING INC. IS PROHIBITED.

		DIMENSIONS ARE IN INCHES TOLERANCES: FRACTIONAL ± .032 ANGULAR: MACH± BEND ± TWO PLACE DECIMAL ±.010 THREE PLACE DECIMAL ±.005		NAME	DATE	AFM Engineering, Inc. AFM Engineering, Inc. Part # 103143 Knurled Roller 6X8 6X12	
			DRAWN	Irwin	1/20/2010		
			CHECKED	Irwin	1/20/2010		
			ENG APPR.				
			MFG APPR.				
		MATERIAL	6061 Alloy	Q.A.		SIZE DWG. NO. REV. A 15310-002 6X8 6X12 SCALE:1:1 WEIGHT: 1.692 SHEET 1 OF 2	
		COMMENTS:					
NEXT ASSY	USED ON	FINISH	Anodize Hard Black				
APPLICATION		DO NOT SCALE DRAWING					



PROPRIETARY AND CONFIDENTIAL			DIMENSIONS ARE IN INCHES TOLERANCES: FRACTIONAL ± .032 ANGULAR: MACH ± BEND ± TWO PLACE DECIMAL ±.010 THREE PLACE DECIMAL ±.005		NAME	DATE	AFM Engineering, Inc. AFM Engineering, Inc. Part # 103143 Knurled Roller 6X8 6X12		
				DRAWN	Irwin	1/20/2010			
				CHECKED	Irwin	1/20/2010			
				ENG APPR.					
				MFG APPR.					
							COMMENTS:		
			MATERIAL 6061 Alloy	Q.A.					
	NEXT ASSY	USED ON	FINISH Anodize Hard Black						
	APPLICATION		DO NOT SCALE DRAWING						
			SIZE			DWG. NO.		REV.	
			A			15310-002 6X8 6X12			
			SCALE:1:2			WEIGHT: 1.692		SHEET 2 OF 2	